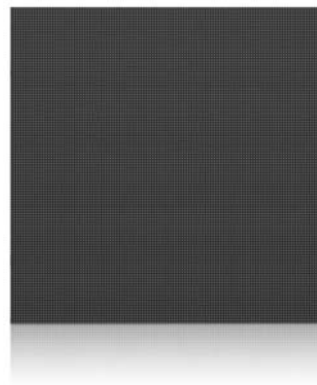


A3 Pro

High Definition LED Display



Professional calibration technology A3C

- Absen 3rd Generation Calibration Technology.
- Perfectly matching panels produced within 12 months.

Professional image representation

- High refresh allows for flawless shooting by professional camera.
- High grayscale delivers full image details even in low brightness condition.



High refresh rate



High-definition



Easy maintenance



Fast installation



User-friendly



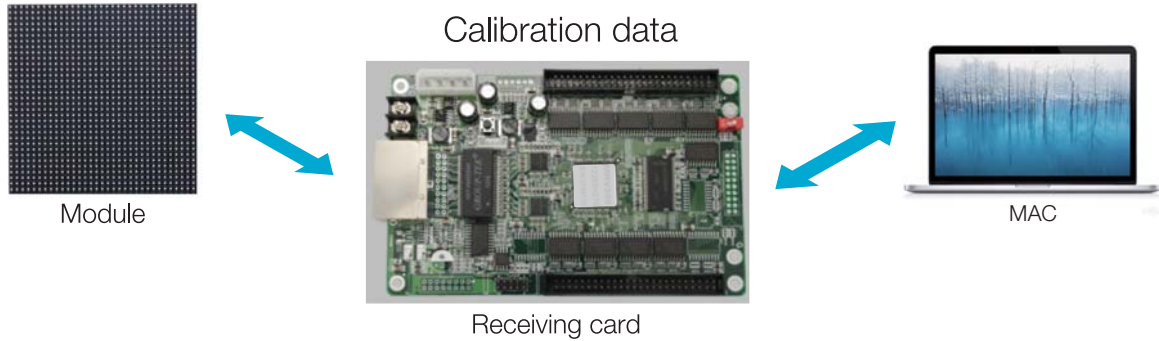
Light weight



Noise-free

Replace modules, unnecessary to re-calibration

Once calibration, all the relative data will be loaded into the receiving cards and modules, replace modules or receiving cards, unnecessary to re-calibrate, saving your labor and time cost.



Seamless mosaic with adjustable brightness and color temperature

The panel cabinets are precision manufactured using CNC machines, and the special high-quality panel connectors create a seamless image mosaic. The displays have an intelligent control system for intelligent adaptive brightness and color temperature control based on the ambient lighting, Which creates a high-quality display effect .



Thin & light weight panels quick maintenance

Each Panel has been carefully crafted and only weighs **10kg**. Front-side maintenance, improved power module design and superior connectors ensure that maintenance efficiency is tripled.



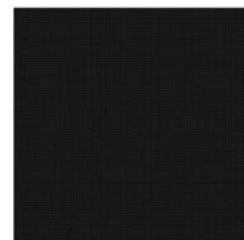
Insert the tool



Clockwise



Pull

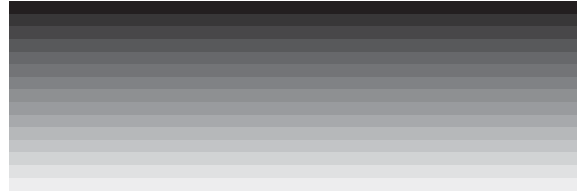


Automatic matched by the magnet design.

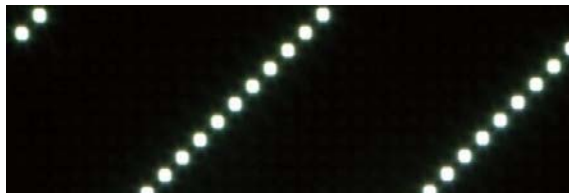
High greys in low brightness conditions



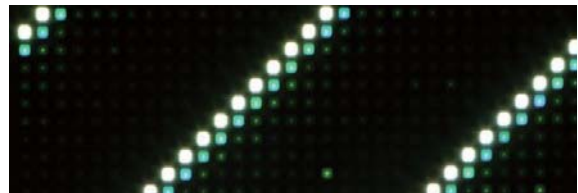
A3Pro



Dynamic content delivered without ghost line or tailing



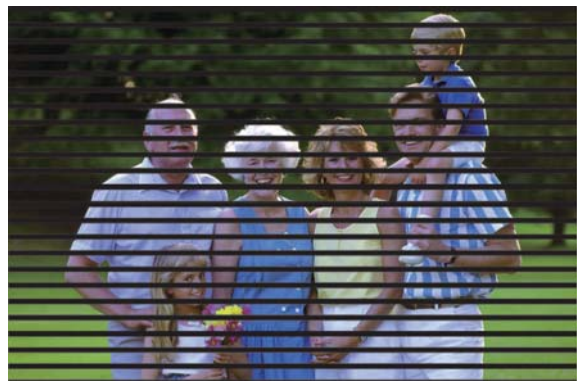
A3Pro



Up to 2000Hz refresh rate



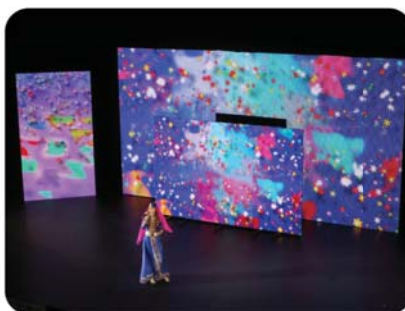
Refresh rate \geq 2000Hz

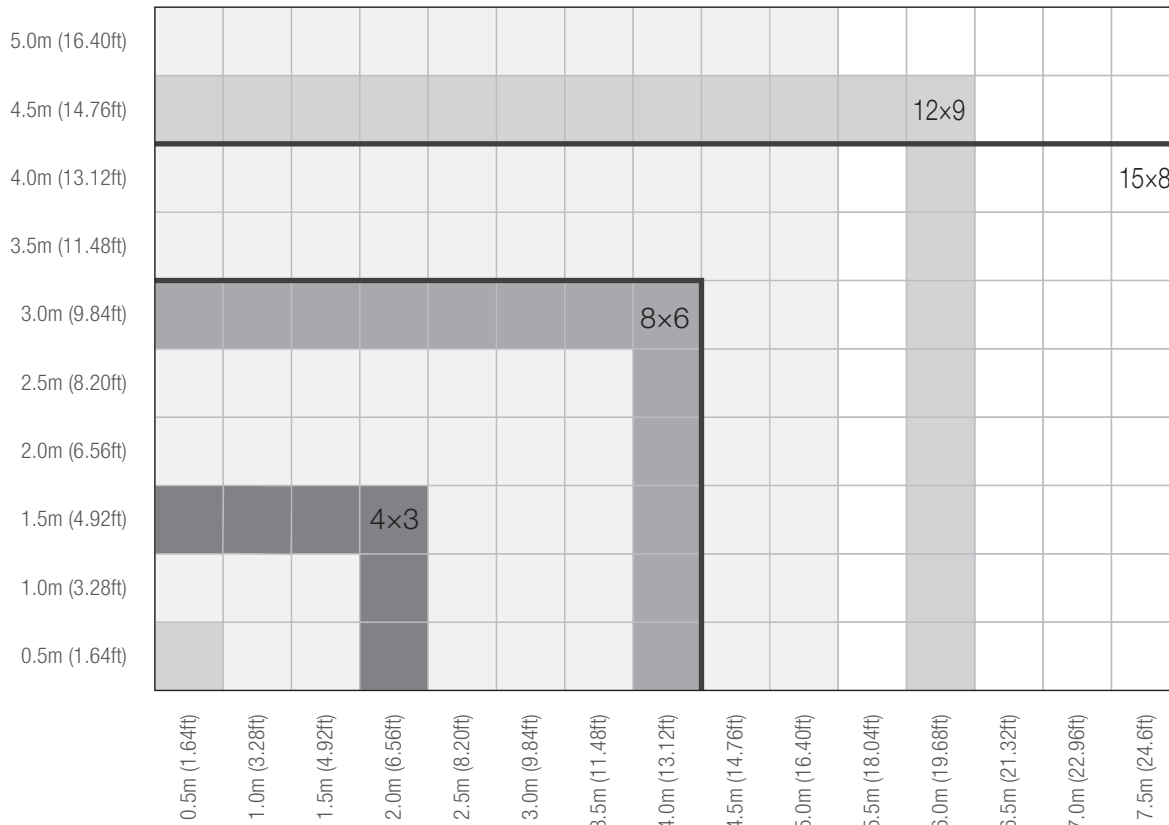


Refresh rate $<$ 2000Hz

Applications:

Indoor stages, exhibitions and where need HD indoor displays. TV stations, concerts, theme parks, exhibitions and so on where needing HD displays install and dismantle easily.





Parameters

Pixel pitch	3.9 mm	Power consumption (max/avg)	540/180 w/sq.m
Pixel configuration	SMD 3 in 1	Panel size (WxHxD)	500x500x96 mm
Brightness	≥1200 nits	Panel weight	10 kg
Refresh rate	≥2000 Hz	Panel material	Die-casting Aluminum
Gray scale	32768 level	Pixel matrix per panel	128x128 pixels
Colors	35 Trillion	Input voltage (AC)	110 ~ 240 V
Ingress protection (Front / Rear)	IP40/IP21	Operating temperature	-10 ~ +40 °C
Viewing angle (H/V)	140/140 deg.	Signal input format (with video processor)	AV, S-Video, VGA, DVI, HDMI, SDI, DP

A3pro	Panel	Ratio	Panel QTY.	Size (m ²)	Dimension (WxH)m	Pixel resolution	Total weight (kg)	Power (Max. Watts)
4:3	4x3	4:3	12	3	2x1.5	512x384	120	1620
	8x6	4:3	48	12	4x3	1024x768	480	6480
	12x9	4:3	108	27	6x4.5	1536x1152	1080	14580
	16x12	4:3	192	48	8x6	2048x1536	1920	25920
16:9	5x3	16:9.6	15	3.75	2.5x1.5	640x384	150	2025
	7x4	16:9.1	28	7	3.5x2	896x512	280	3780
	9x5	16:8.9	45	11.25	4.5x2.5	1152x640	450	6075
	10x6	16:9.6	60	15	5x3	1280x768	600	8100
	12x7	16:9.3	84	21	6x3.5	1536x896	840	11340
	14x8	16:9.1	112	28	7x4	1792x1024	1120	15120
	15x8	16:8.5	120	30	7.5x4	1920x1024	1200	16200
16x9	16:9	144	36	8x4.5	2048x1512	1440	19440	

Shenzhen Absen Optoelectronic Co., Ltd. reserves the right to modify product design, specifications, and parameters without further notice. Photos are used for illustration purpose only as products may differ from these photos. All rights reserved by Shenzhen Absen Optoelectronic Co., Ltd.

Shenzhen Absen Optoelectronic Co., Ltd

Add: Absen Building, Huawei Industrial Park, Bantian, Longgang District, Shenzhen 518129, P.R.China

Tel: +86-755-89747399 E-mail: absen@szabsen.com
 Fax: +86-755-89747599 Website: www.absen.com

Absen American Inc.

Add: 7703, Kingspointe Parkway, Suite 600, Orlando, FL 32819

Tel: +1-949-677-1100 E-mail: kobe@szabsen.com
 Fax: +1-407-203-8873 Website: www.usabsen.com

Absen GmbH

Add: Eisenstrasse 5, 65428 Russelsheim(Frankfurt), Germany

Tel: +49(0)6142 920 87 56 E-mail: europe@szabsen.com
 Fax: +49(0)6142 920 87 57 Website: www.absen.com