

Portable Loop

IL-PL20



Installation & User Guide

March 2017

Contents

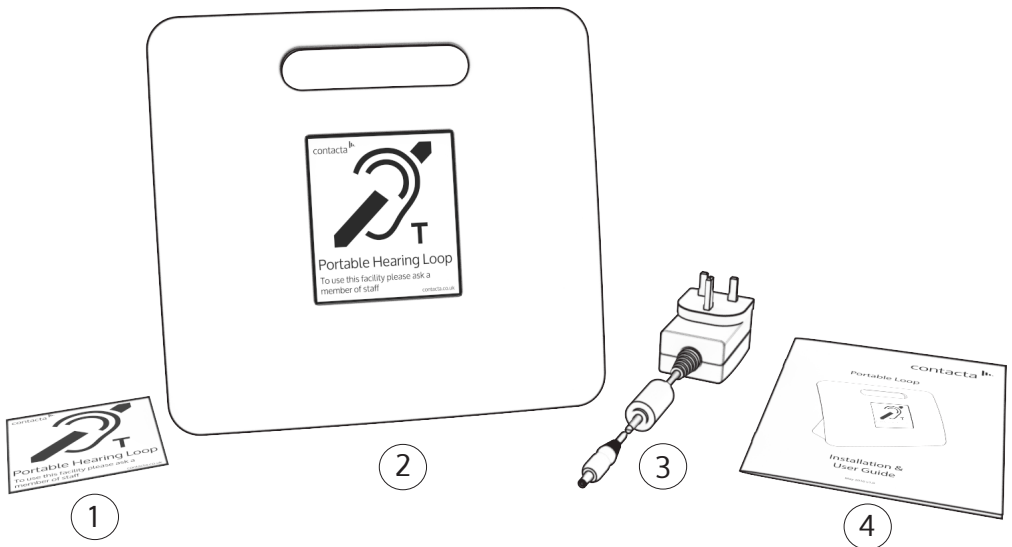
Product Overview	4
Components	4
Setting Up	5
Using the System	6
Additional Connections	7
Important Information	8
Troubleshooting	9

Product Overview

Our Portable Loop is a versatile solution, providing mobile desktop assistance for your customers.

It can be moved between rooms as required and is used in small rooms where conversation between two people takes place.

Components



1. Hearing Loop Sticker
2. Portable Loop
3. Power Supply
4. Installation & User Guide

Please note: there is a Portable Loop Shelf available as an accessory, which is an ideal storage unit and charging location for the Portable Loop.

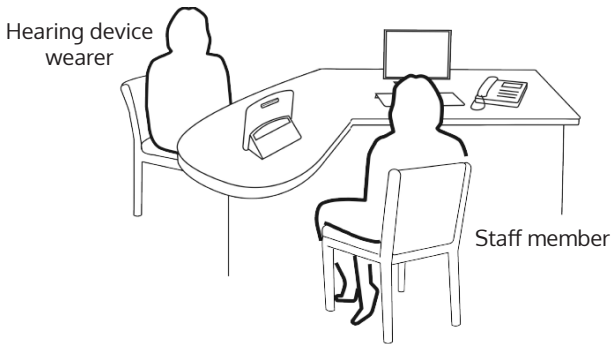
Setting Up

Charging the Portable Loop

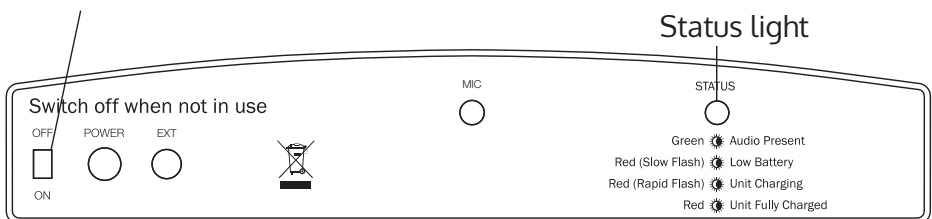
It is important to fully charge your unit once you have received it.

1. Plug the power supply in to the mains socket.
2. Connect the power supply lead to the the rear of the Portable Loop using the socket marked "Power". The status light will then rapidly flash red.
3. The status will turn a steady red when the unit is fully charged.

Setting up the Portable Loop



1. Place the Portable Loop on the desk or counter top between the hearing device wearer and the member of staff.
2. Ensure the rear of the unit, with the in-built microphone, is facing the staff member, as shown below.
3. The front of the unit, with the "T" position label, needs to face the person wearing the hearing device.
4. Slide the switch on the left hand side of the rear of the unit to the "ON" position. The system is now ready to use.



Using the System

Once you have set up the system, you need to just hold a conversation as normal.

During normal operation, the status light will flash green when conversation is taking place. This indicates that the system is working.

If the hearing device wearer doesn't pick up a clear signal:

1. Ensure the unit is fully charged.
2. Adjust the position of the Portable Loop on the desk or counter to achieve optimum performance. The hearing device wearer should be no more than 1.2 metres away from the unit.
3. Draw the hearing device wearer's attention to the sign on the unit, checking their device is in the "T" position.
4. Ask the hearing device wearer to check the volume setting on their device.

If you follow the above steps and the hearing device user is still unable to pick up a clear signal, the issue is one of the following:

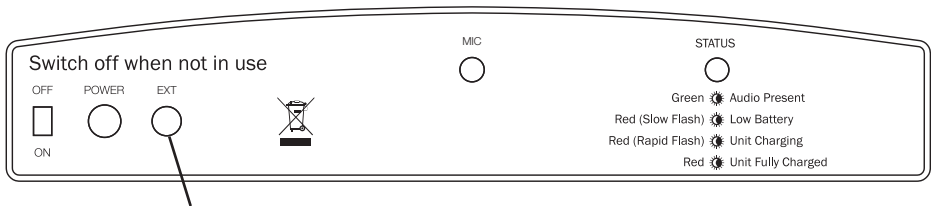
- The Portable Loop has a fault.
- The user's hearing device is not functioning correctly.
- The telecoil in the user's hearing device has not been enabled.

Follow the steps outlined in Troubleshooting (see page 9) if you need to determine if the Portable Loop has a fault.

Additional Connections

External Microphone

If more than two people are part of the conversation, we highly recommend using a large area loop. If a large area loop is not available, you will need to use an external boundary microphone.



1. Insert the microphone plug into the socket marked "EXT" on the rear of the Portable Loop.
2. Position the Portable Loop in front of and facing the person requiring the loop, with the back of the loop positioned towards the speaker.
3. If using an external boundary microphone, position the microphone on the desk top towards those speaking.

SCART Lead

To connect the Portable Loop with a television or other external sound source, connect using a SCART lead. The Contacta SCART adapter is required.

1. Insert SCART connection into the appropriate socket on your sound source.
2. Insert the jack plug into the socket marked "EXT" on the rear of the Portable Loop.
3. Position the Portable Loop so it faces the hearing device wearer.

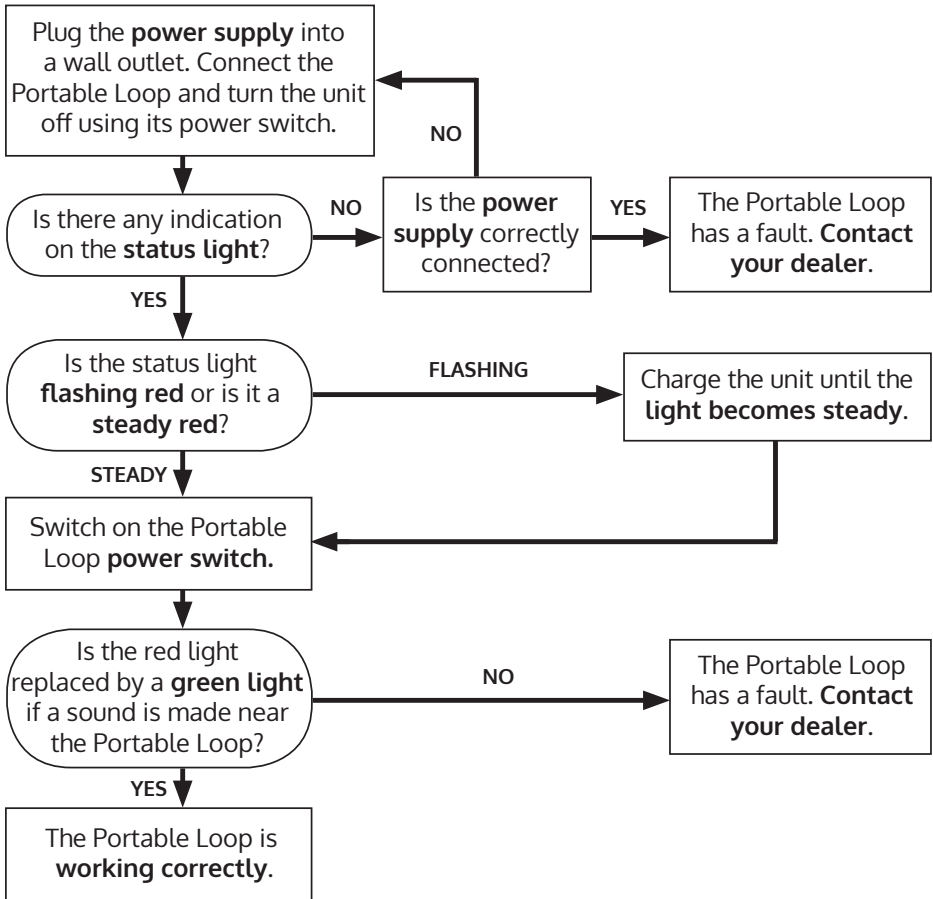
Please note: the internal microphone is inactive when an external device is connected.

Important Information

- A green status light indicates correct operation.
- If the battery is low, the status light will show an infrequent red flash, as well as the normal green indication for audio.
- The unit may be charged while the system is in operation. If audio is picked up while charging is occurring, the status light will flash green and red.
- When the Portable Loop is not being used it should be left connected to the charger with its switch in the "off" position. This consumes very little power.

Note: the Portable Loop will operate for approximately 4 hours on fully charged batteries.

Troubleshooting



If you are still experiencing problems, please contact your local dealer.



Local dealer:

UK & ROW
+44 (0) 1732 223900
sales@contacta.co.uk

US & Canada
+1 616 392 3400
info@contactainc.com

www.contacta.co.uk